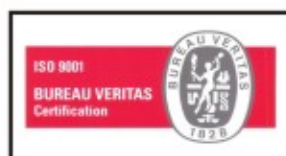




EXTRA CO

Complete range of GRP, GRV, GRE products





COMPANY PROFILE

Extraco Composites India Pvt Ltd, a joint venture company with Extra Co Fibre Glass & Prefab House LLC established in Sharjah in 1981, is a leading manufacturer in fibre glass industry, operating in accordance with the quality standards of ISO 9001. Commitment to quality and customer - satisfaction has always ensured successful completion of projects by providing a combination of reliable products and services. Much knowledge has been accumulated during the past two decades, resulting from extensive research, Product testing and providing advanced information on product performance.

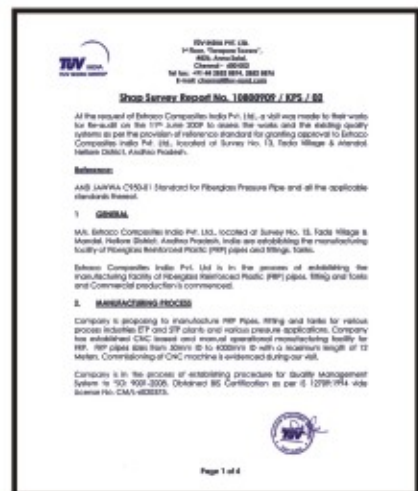
The GRP Products & services provided by Extra Co. meet client - requirements by providing long - term performance solution to the highest international standards.

PRODUCTS

- GRP/GRE/GRV Pipes and Fittings
- GRP / GRV Cylindrical Tanks (Fuel, Chemical, Water) by filament winding process both above and underground
- GRP / GRV Cylindrical and 'V' tanks (Water & Sewer) by hand lay up process above and underground
- GRP Scrubbers
- GRP Products : Complete range for sewerage and Drainage System
- GRP Pultruded Profiles, Gratings, Handrails, Ladders, Stairs, etc.

Extra Co. has obtained the followings accreditations:

- ANSI/AWWA C950-01 from TUV India Pvt. Ltd.
- ISO 9001 : 2008 from Bureau Veritas Certification India
- IS I2709 : 1994 from Bureau of Indian Standards (BIS)
- IS 14402 : 1996 from Bureau of Indian Standards (BIS)*



Quality Assurance Policy - ISO 9001 : 2008

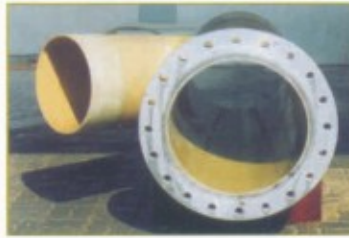
To build Quality into the processes with Continual Improvement, to customer standards, for achieving defect free products on time, every time aiming at Total Customer Satisfaction, by involvement of personnel and upgradation of technology.

* Certification under process



GRP / GRE / GRV PIPES & FITTINGS

With complete Engineering Analysis for Stress, Surge and Flexibility



APPLICATIONS

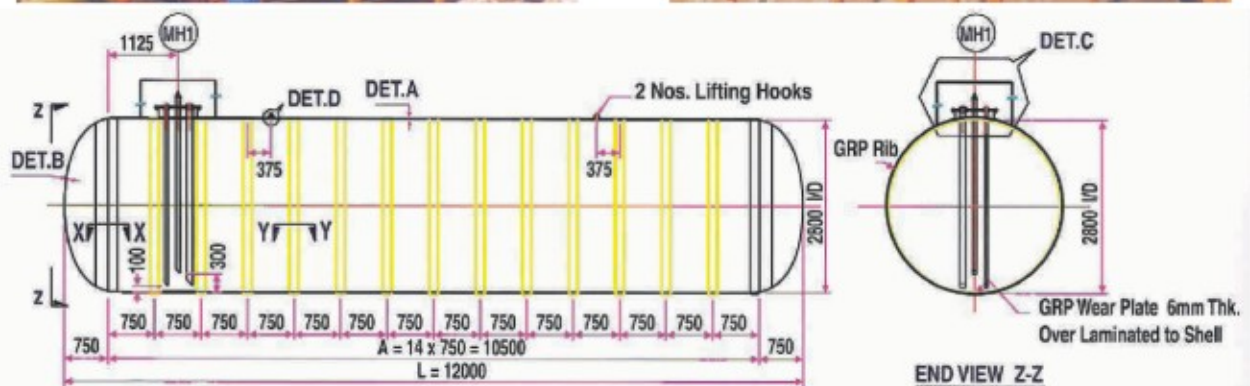
- Sanitary sewers
- Storm water systems
- Sewer force mains
- Effluent water
- Manhole Liners
- Structural manholes
- Water transmission
- Pumping stations
- NDM
- Thrust boring
- Valve chambers
- Fire mains
- Water desalination plants
- Power plants
- Chemical and petrochemical industry
- Food industries (refineries and breweries)

| Pressure Class (Bar) | Inner Diameter (mm) | | | |
|----------------------|---------------------|-----------|------------|-----------|
| | 25 - 300 | 350 - 600 | 700 - 1200 | Upto 2000 |
| Gravity | ✓ | ✓ | ✓ | ✓ |
| 6 | ✓ | ✓ | ✓ | ✓ |
| 12 | ✓ | ✓ | ✓ | ✓ |
| 16 | ✓ | ✓ | ✓ | ✓ |
| 25 | ✓ | ✓ | -- | -- |
| 32 | ✓ | -- | -- | -- |

NB : Other pressure systems can be made available upon request
 Diameters greater than 2000 mm are also available upto 4000 mm.



GRP CYLINDRICAL FUEL TANKS





GRP / GRV CHEMICAL TANKS AND SCRUBBERS



APPLICATIONS

- Sewer Treatment Plants
- Water Treatment Plants
- Water Desalination Plants
- Petrochemical Industry
- Chemical Industry
- Oil & Gas Industry

APPLICABLE STANDARDS

- BS 4994
 - ASTM D 4097
 - ASTM C 581
 - ASTM C 582
- and other equivalent standards

CHEMICAL MEDIA

- NaOCL
 - NaOH
 - HCL
 - H₂S
 - Cl₂
 - H₂SO₄
- and many others...

- NB :**
- Design Temperature, Design Pressure, pH Value, Chemical Concentration and required size will determine the type of Resin, the thickness of liner and the overall wall thickness of the vessels.
 - Multiple features can be provided such as: GRP ladder and safety cage, GRP platform/gratings, handhold, GRP flanged nozzles, GRP manhole with cover, GRP name plate, GRP holdings claw, GRP angles for fixing level indicator, level indicator, SS accessories, etc.



GRP GRATINGS, HANDRAILS LADDERS & PULTRUDED PROFILES



GRP Pultruded Ladders and Handrail



GRP Pultruded Ladder and safety Cage



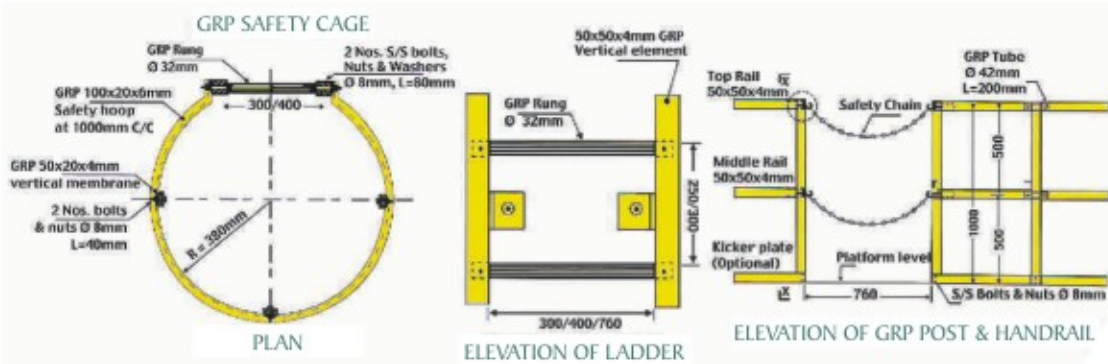
GRP Moulded Grating



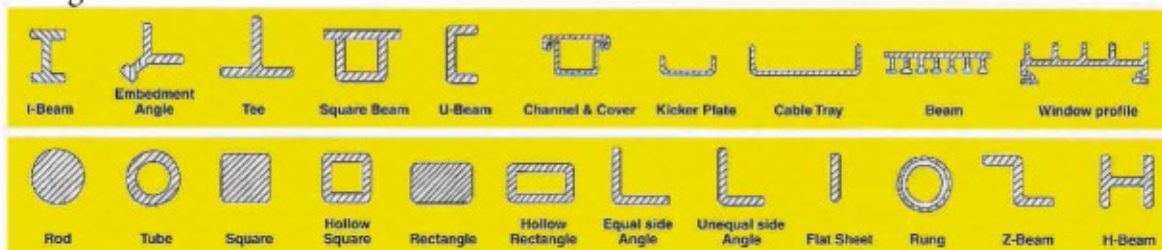
Pultruded Grating in Sewerage Treatment Plant



Corroded Steel Grating Vs GRP Moulded Grating



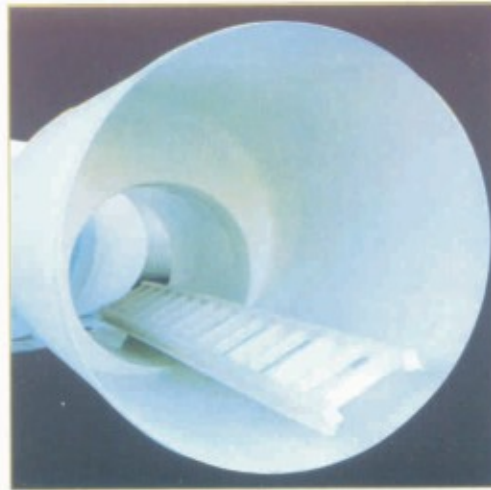
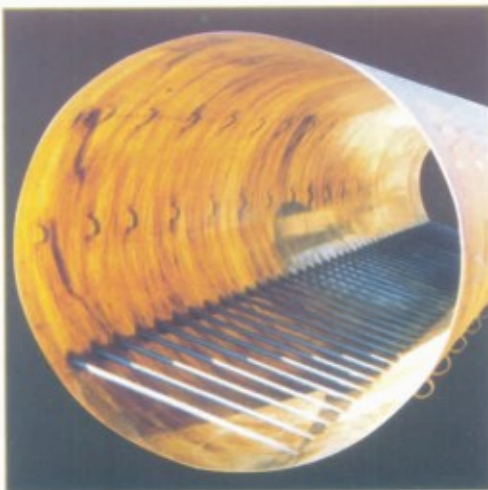
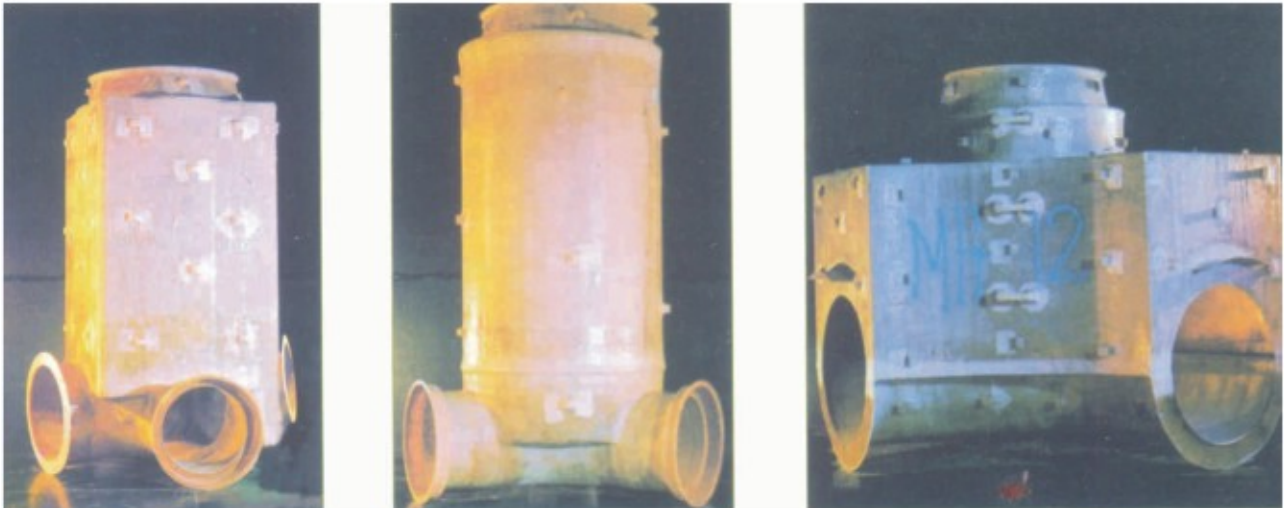
Range of Pultruded Profiles





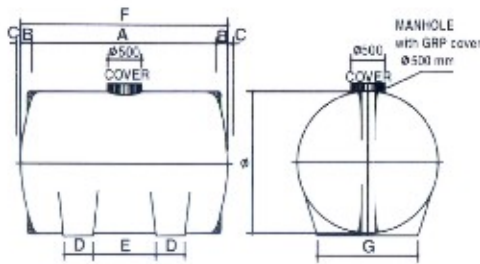
GRP SEWERAGE AND DRAINAGE SYSTEMS

Benching, Shaft, Ladder, Handrail, Cover Slab, etc.



Extra Co : The leader in Sewerage Systems

GRP CYLINDRICAL TANKS



| Standards GRP Cylindrical Water Tanks | | | | | | | | | |
|---------------------------------------|------|-------|------|-----|-----|------|-------|------|------------|
| Capacity (U.S. Gallons) | Ø | A | B | C | D | E | F | G | No of Logs |
| 200 | 800 | 1120 | 50 | 50 | 120 | 340 | 1220 | 550 | 2 |
| 250 | 1000 | 1200 | 50 | 50 | 200 | 400 | 1300 | 550 | 2 |
| 350 | 1030 | 1600 | 100 | 60 | 300 | 430 | 1800 | 570 | 2 |
| 400 | 1200 | 1400 | 100 | 60 | 200 | 290 | 1600 | 550 | 2 |
| 500 | 1200 | 1730 | 100 | 60 | 300 | 550 | 1930 | 550 | 2 |
| 600 | 1300 | 1650 | 100 | 60 | 300 | 450 | 1850 | 600 | 2 |
| 800 | 1400 | 1950 | 100 | 80 | 300 | 620 | 2150 | 600 | 2 |
| 1000 | 1570 | 2000 | 100 | 80 | 330 | 610 | 2200 | 830 | 2 |
| 1200 | 1700 | 2000 | 100 | 80 | 330 | 570 | 2200 | 830 | 2 |
| 1500 | 1930 | 2150 | 92.5 | 100 | 360 | 580 | 2335 | 1340 | 2 |
| 1800 | 1930 | 2305 | 92.5 | 100 | 360 | 435 | 2490 | 1340 | 2 |
| 2000 | 1930 | 2715 | 92.5 | 80 | 360 | 1000 | 2900 | 1340 | 2 |
| 2500 | 2100 | 2550 | 200 | 80 | 360 | 830 | 2950 | 1500 | 2 |
| 3000 | 2100 | 3100 | 200 | 80 | 360 | 510 | 3500 | 1500 | 3 |
| 3500 | 2100 | 3650 | 200 | 80 | 360 | 785 | 4050 | 1500 | 3 |
| 4000 | 2100 | 4200 | 200 | 80 | 360 | 585 | 4600 | 1500 | 4 |
| 4500 | 2100 | 4750 | 200 | 80 | 360 | 770 | 5150 | 1500 | 4 |
| 5000 | 2100 | 5300 | 200 | 80 | 360 | 625 | 5700 | 1500 | 5 |
| 5500 | 2100 | 5800 | 200 | 80 | 360 | 750 | 6250 | 1500 | 5 |
| 6000 | 2100 | 6400 | 200 | 80 | 360 | 650 | 6800 | 1500 | 6 |
| 6500 | 2100 | 6950 | 200 | 80 | 360 | 760 | 7350 | 1500 | 6 |
| 7000 | 2100 | 7500 | 200 | 80 | 360 | 665 | 7900 | 1500 | 7 |
| 7500 | 2100 | 8050 | 200 | 80 | 360 | 750 | 8450 | 1500 | 7 |
| 8000 | 2100 | 8600 | 200 | 80 | 360 | 675 | 9000 | 1500 | 8 |
| 9000 | 2100 | 9700 | 200 | 80 | 360 | 700 | 10150 | 1500 | 9 |
| 10000 | 2100 | 10920 | 120 | 70 | 360 | 700 | 11160 | 1500 | 10 |



Diamond Plaza, # 995-P, 12th Main Road, 2nd Avenue
 Anna Nagar, Chennai 600 040, India. Tel : 044 - 2616 2735 / 1422
 Telefax : 044 - 4269 3754 Email : projects@extracomposites.com
 extraco_india@rediffmail.com Website : www.extracomposites.com

Works : Survey No. 13, Tada Village & Mandal,
 Nellore District, Andhra Pradesh, India

**IN COLLABORATION
 WITH**

EXTRA CO FIBRE GLASS & PREFAB HOUSES L.L.C.

P.O. Box # 6174, Shariah - UAE. Tel : +971 6 543 2538 / 543 1621
 Fax : +971 6 542 1381 Website : www.extraco.ae